

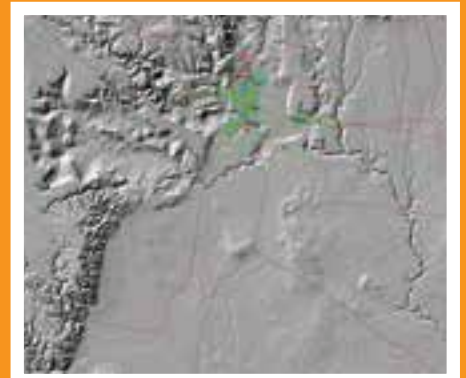


Spatial
Vision

gis JOURNEY

Training Pathway to Operational Excellence

Transition to ArcGIS Pro



Transition to ArcGIS Pro

Spatial Vision's Introduction to ArcGIS Pro course is held over one day and provides a comprehensive background to applying existing knowledge of ArcGIS Desktop (ArcMap and Arc Catalog) to establishing the same workflows in ArcGIS Pro.

This course will look at how ArcGIS Pro can assist in visualising, analysing and mapping spatial data.

Our training expertise is unparalleled and all of our trainers are accredited industry professionals and consultants.

On completion, candidates will have demonstrated their competence and ability in:

- Setting up and using ArcGIS Pro projects
- Performing geoprocessing and analysis tasks
- Establishing good data editing practices
- Creating and sharing map layouts
- Importing MXD files and working with Victorian Government VicMap data

Course Format

Spatial Vision's course format ensures that students get maximum benefit from the training day. Students work to complete practical exercises which consolidate the course material. Students also benefit from peer group discussions.

Prerequisites

Spatial Vision's Transition to ArcGIS Pro is designed to build on the knowledge of users experience with ArcGIS desktop. Users should be capable of using ArcMap and ArcCatalog.

Course Outline

- Brief Introduction to ArcGIS Pro
- Fundamental Differences
- Viewing and Exploring Data
- Setting up New Projects and Data
- Querying and Analysing Map Layers
- Editing Data
- Joins
- Creating Map Outputs
- 3D Capabilities

You can now accrue 8 SSSI CPD points