

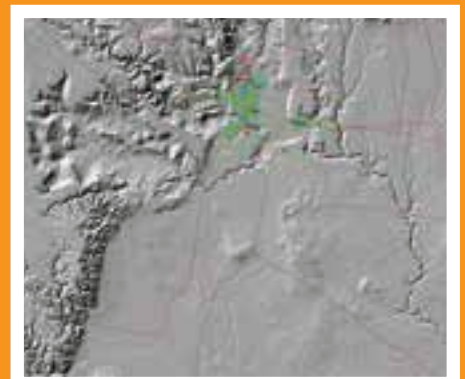


Spatial  
Vision

# gis JOURNEY

Training Pathway to Operational Excellence

Intro to ArcGIS Pro



1300 36 67 96

[www.gisjourney.com](http://www.gisjourney.com)



## Introduction to ArcGIS Pro

Spatial Vision's Introduction to ArcGIS Pro course is held over two days and provides a comprehensive background into the latest of ESRI's products; ArcGIS Pro. This course looks at how ArcGIS Pro can assist in visualising, analysing, and mapping spatial data.

This course covers the basics of ArcGIS Pro which includes sharing maps, layers and processes, editing and displaying 3D and 2D data, performing geo processing, querying and analysis tasks and creating map layouts.

Our training expertise is unparalleled and all of our trainers are accredited industry professionals and consultants.

**On completion, candidates will have demonstrated their competence and ability in:**

- Setting up and using ArcGIS Pro projects
- Performing geoprocessing and analysis tasks
- Creating and sharing map layouts
- Importing MXD files and working with Victorian Government VicMap data

## Course Format

Spatial Vision's course format ensures that students get maximum benefit from the training day. Students work to complete practical exercises which consolidate the course material. Students also benefit from peer group discussions

## Prerequisites

Spatial Vision's Introduction to ArcGIS Pro course is designed to build knowledge on how to visualise and analyse spatial data. There are no prerequisites for this course.

## Course Outline

- Introduction to ArcGIS Pro
- Creating a Project and Adding Data
- Viewing and Querying Data
- Joins
- Creating New Data
- Editing Data
- Creating Map Outputs
- 3D Capabilities

## Who Should Attend?

The Spatial Vision Introduction to ArcGIS Pro course is specifically aimed at staff who will have direct responsibilities for the planning and implementation of ArcGIS Pro at an operational level.

It will be equally useful for those already in a GIS role, specifically those who support the GIS functions, so that they can better appreciate how their activities will contribute towards the growth in maturity of the GIS process.



Training will contribute towards credit for two units of nationally accredited competency with TAFE NSW Riverina Institute



You can now accrue 8 SSSI CPD points