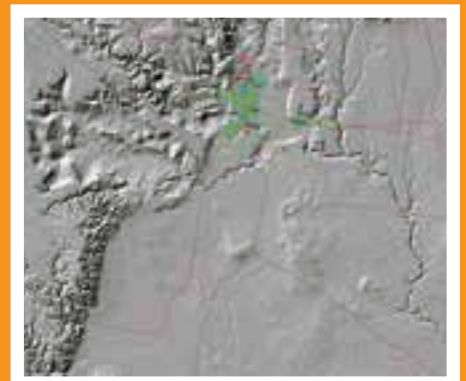


# gis JOURNEY

Training Pathway to Operational Excellence

Intro to ArcGIS



## Introduction to ArcGIS 10

Spatial Vision's Introduction to ArcGIS 10 course is held over two days and provides a comprehensive background to spatial information concepts. It then uses these concepts as the foundation in applying ArcGIS to meet your GIS and mapping needs.

This course covers the basics of ArcGIS which includes the main interface modules, data selection and query, editing and also map production.

Our training expertise is unparalleled and all of our trainers are highly accredited industry professionals and consultants.

**On completion, candidates will have demonstrated their competence and ability in:**

- Understanding GIS Concepts
- Querying, Selecting and Analysing Map Layers
- Geoprocessing
- Map Creation
- Data Management
- Data Editing and Maintenance

## Course Format

Spatial Vision's course format ensures that students get maximum benefit from the training day. Students work to complete practical exercises which consolidate the course material. Students also benefit from peer group discussions

## Prerequisites

Spatial Vision's Introduction to ArcGIS 10 is designed to build knowledge of the ArcGIS principles. There are no prerequisites for this course.

## Course Outline

- GIS Concepts
- What is ArcGIS?
- Spatial Data Formats
- Viewing and Exploring Data
- Querying and Analysing Map Layers
- Geoprocessing Tools
- Creating Map Outputs
- Database Management
- Data Editing and Maintenance

You can now accrue 8 SSSI CPD points